

HYDROLITE SF30/200-26/9

Dual Frequency Echo Sounder



INSTANT DEPLOYMENT

Easy Plug and Play with auto ranging



BROWSER-BASED INTERFACE

WebUI (Web User Interface):
No downloads required



REAL-TIME DATA OUTPUT

Continuous output via Bluetooth
or RS-232 to your data collector



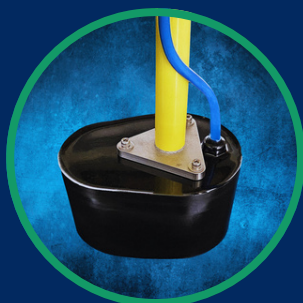
IP-65 RATED HOUSING

IP-65 compliant housing designed
for harsh field conditions.



KIT INCLUDES:

- Hydrolite Topside
- Dual Frequency 30/200 kHz Transducer
- Hydrolite Pole/Transom Mount
- Rugged Shipping Case
- User Manual
- 12-Month Limited Factory Warranty
- Lifetime Technical Support



Transducer

OPTIONS

GNSS Receiver

Data Collector / Software

Bar Check / SV

PC Data Acquisition

Tide Gauge



Specifications

Frequency:

30 kHz / 200 kHz

Beam Width:

200 kHz: 9° Conical

30 kHz: 7-beam honeycomb,
26°

Ping Rate:

1 Hz

Depth Accuracy:

1 cm

Output Formats:

NMEA0183 (DB1), ASCII,
Sonarmite DFX

Range:

1.3 – 675 ft (0.4 m – 200 m)

I/o:

Serial (DB9), Bluetooth, Wi-Fi

Power:

Internal Battery, 14.4 V / 45 Wh

Compatibility:

Trimble, Leica, Topcon,
Carlson, Hypack, QPS, PDS

Topside Unit:

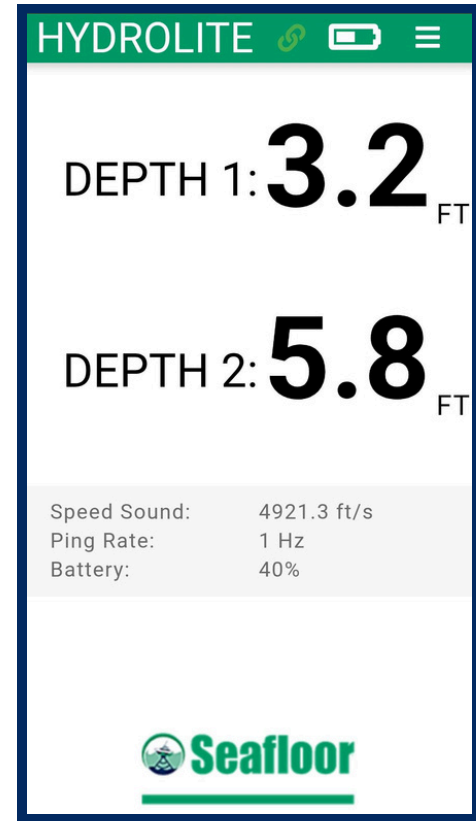
1 lb (0.45 kg), 6.9 × 4.5 × 3.4 in
(175 × 114 × 86 mm)

Transducer:

6.5 kg (14 lb.)

Transducer Pressure Rating:

Up to 10m



Mobile WebUI